



CADLAB

COLOGNE



ABOUT US

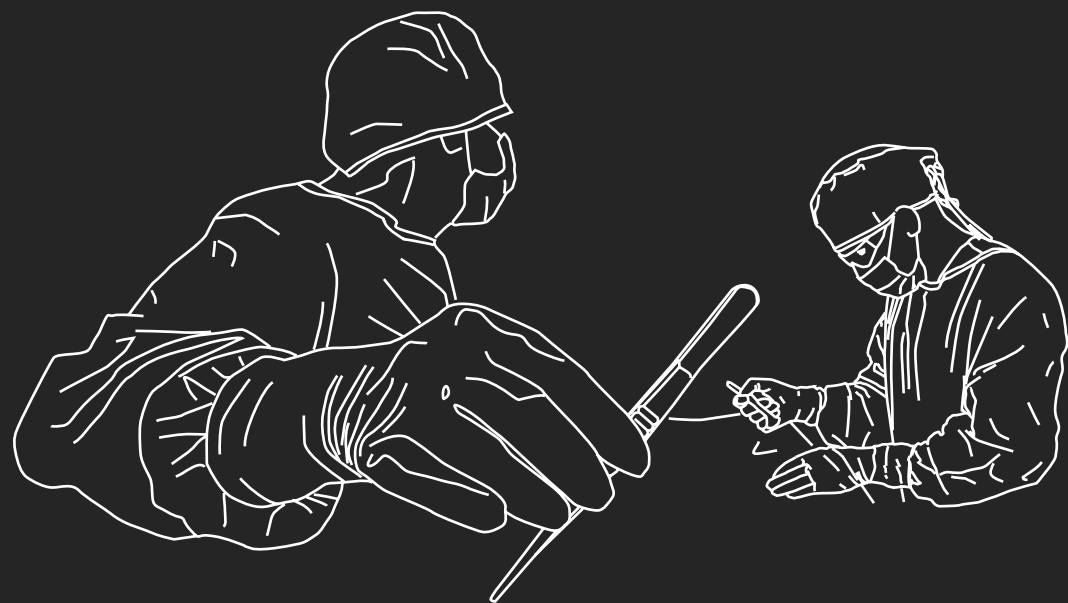
The CADLAB COLOGNE is an independent high-class training facility focusing on surgical education in conjunction with fresh-frozen human specimen. Our 140m2 wet lab features up to 10 operation tables. We are fully equipped with OR infrastructure including in-house 3D C-arm fluoroscopy, standardized pre- & post-operative CT and MRI imaging. With our partners we can also fulfill your individual needs for surgical instrumentation and medical equipment (e.g., surgical bovie, suction systems, power tools, etc.). Water management and ambient lighting also provides perfect basis for arthroscopy and SportsMed events.

Spacious meeting rooms are available overlooking the skyline of Cologne providing an inspirational learning atmosphere with access to our Japanese rooftop garden.

We support with add-on services like catering, transportation, washing, complex imaging requests (X-ray/MRI/CT) for R&D events and navigation systems, and seamless management of anatomic human specimen. We offer an overarching one-stop-shop service for up to 60 attendees - there's nothing we can't support you with.

We're located on the BioCampus Cologne - airports of Cologne and Dusseldorf are each reachable in around 30 minutes, Frankfurt in 50 minutes by train. Cologne is a major junction for international railway routes, highways and provides a vibrant city and colored nightlife.



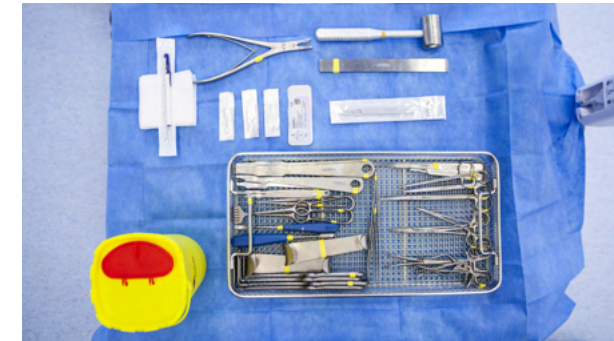


The CADLAB COLOGNE is an independent high-class training facility designed for surgical events on fresh frozen human specimen. The CADLAB COLOGNE offers all infrastructure for a successful event provided by a dedicated team of professionals, and is founded by RIMASYS GmbH. RIMASYS is the world's sole provider of lifelike fractures in human specimen enhancing surgical education and MedTech R&D.

 **CADLAB COLOGNE**
perfect location for your surgical events

WET LAB IMPRESSIONS

Illustrative set-up
with six working
stations – LED
graphic can be
customized



SURGICAL INSTRUMENTATION

Most common surgical soft-tissue tools
and instrumentation provided



MEDICAL EQUIPMENT

Suction systems and electrosurgical units
available



INDIVIDUAL BRANDING

Customized graphic on LED wall possible
to promote your branding

EDUCATION CENTER

Flooded with natural sunlight, the wet lab extends across 140 m² and can accommodate up to 10 working stations. High ceilings of 4.7 m and fully airconditioned rooms create a comfortable working environment. Natural light is complemented by mobile operation and ceiling lamps but can be fully darkened for keyhole operations. Working stations are radiotranslucent and can be audiovisually connected to the wall screens. Besides surgical soft-tissue tools and instrumentation, all additional requirements can be met upon request.

ARTHROSCOPY SPORTSMED COURSES

Infrastructure for water management and ambient lighting providing high-quality environment for arthroscopy trainings



MINIMAL INVASIVE PROCEDURES

Convenient set-up of equipment intensive course formats in OR-like environment



EDUCATION CENTER

Open layout of the wet lab offers perfect set-up of equipment intensive course formats such as arthroscopy, SportsMed and minimal invasive procedures. Efficient water management and even OR-like green ambient lighting ensure a smooth and productive event.

EDUCATION Center

Latest fluoroscopy technology is available through two 3D C-arms in our dedicated X-ray zone. Mobile lead walls allow for easy screening while working without gowns can continue in the lab. We manage dosimetry and special radiation requests with up to six C-arms.



3D TECHNOLOGY

High-definition screening and three dimensional cinematic rendering



CONNECTIVITY

C-arms can be connected to external screens and navigation devices



X-RAY AREA IMPRESSIONS

Dedicated radiation protected area for convenient fluoroscopy usage

X-RAY AREA WITH 3D C-ARMS

Two of the latest SIEMENS Healthineers Cios Spin systems are available with 3D technology, supported by carbon tables for artefact free images. Up to six units based upon request

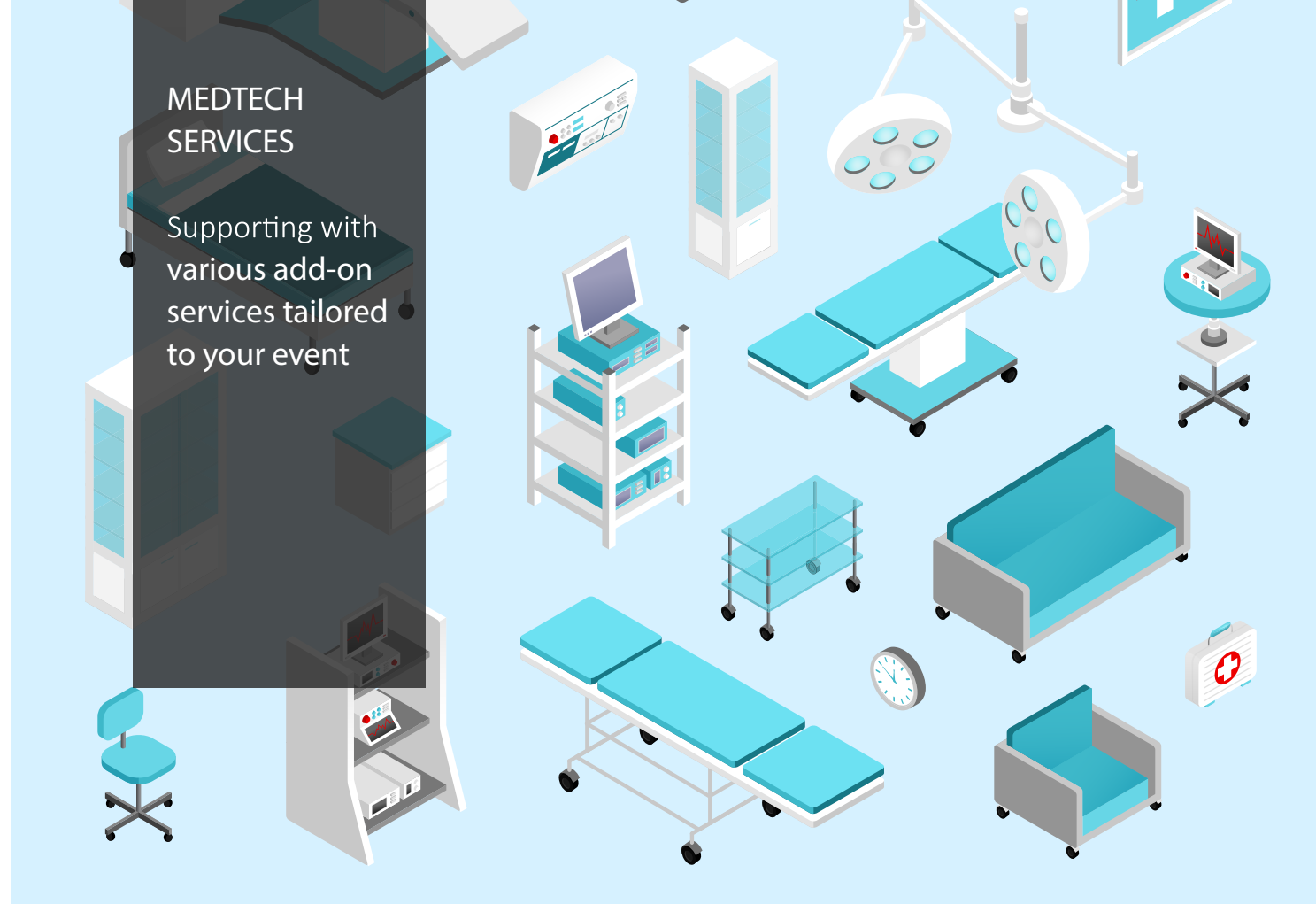


CHANGING ROOMS
Three changing rooms to conveniently get ready, fully airconditioned



THE KÖLSCH CORNER
Business lounge with space for casual conversations. Coffee and refreshments with a local touch





EDUCATION Center

Wide range of additional services are available to fulfill all your requirements. Washing and sterilization of your instrumentation and implants can be provided. Permanent storage rooms are available to store your equipment until the next event. We can also coordinate pickup by a logistics partner. We manage the procurement of freshfrozen anatomic specimen and allow for reuse across events to ethically fulfill the wishes of the donor. Complex imaging requests and screening protocols can be fulfilled by our radiology partners.



WASHING & STORAGE

Providing cleaning of implants and instruments with opportunity to store your equipment at our location



ANATOMIC SPECIMEN LOGISTICS & REUSE

Managing the cadaveric specimen from procurement to cremation to ethically fulfill the wishes of the donor



RADIOLOGIC IMAGES

Supporting the acquisition of X-ray or CT/MRI images according to your screening protocol

WEBINARS & VIDEO PRODUCTION

High-quality content generation for webinars, live streams, educational videos or surgical techniques



PROFESSIONAL STUDIO ENVIRONMENT

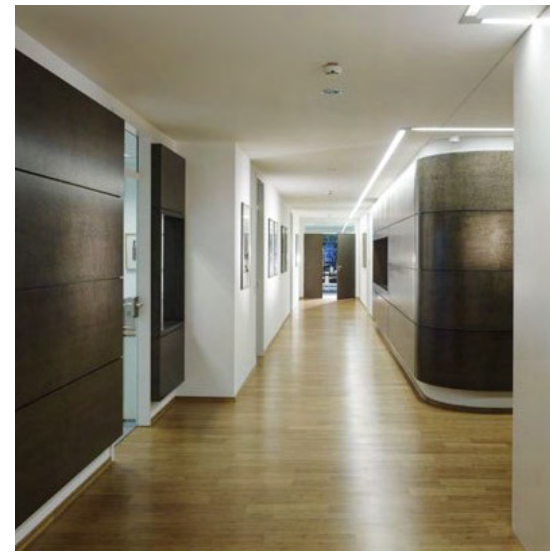
Team of video experts supporting from planning to post-production



EDUCATION
Center

Leveraging high ceilings and excellent audio acoustics, the wet lab offers the perfect location for high-quality video generation. Webinars, live streams or surgical techniques can be produced in a studio environment. Our professional video partner can support from planning to postproduction and marketing of your content.

CONFERENCE
AREA



CONFERENCE AREA
250 m² top floor with seminar
rooms & Japanese rooftop garden

MEETING ROOMS
Three rooms for up to 80
attendees overlooking Cologne

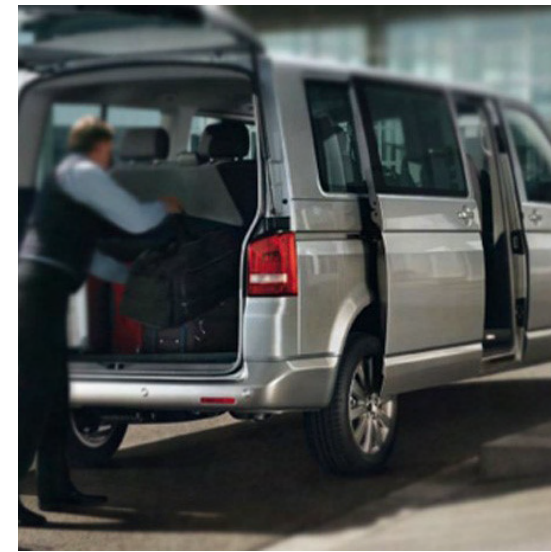
HOSPITALITY
Catering, audiovisual equipment
and meeting services



CONFERENCE AREA

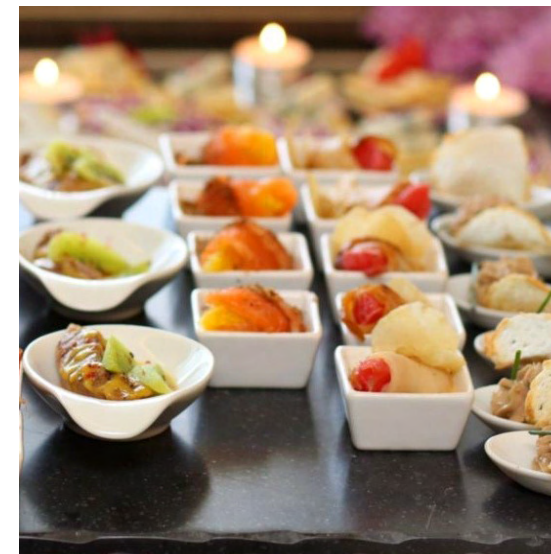
Access to three meeting rooms (90 m² + 2x 35m²) and Japanese rooftop garden

Possibility to live stream video from wet lab to meeting rooms



HOSPITALITY SERVICES

Supporting with catering, shuttle services and our local knowledge for hotel or dinner arrangements





CADLAB COLOGNE

Nattermannallee 1 | 50829 Cologne | Germany



THE DOM OF COLOGNE

Is a Catholic cathedral in Cologne, Northrhine-Westfalia, Germany. It is the seat of the Archbishop of Cologne and of the administration of the Archdiocese.



NEW HARBOUR

Refers to the three 17-story buildings in the Rheinauhafen of Cologne. Vibrant quarter with museums, bars and restaurants.



HISTORICAL OLD TOWN

Home of the Kölsch (beer). It is unusual because although it is warm fermented with ale yeast, it is then conditioned at cold temperatures like a lager.

TEAM OF DEDICATED PROFESSIONALS



ALEXANDER CLAßEN
Executive Director - ensures smooth
execution of your events and is your
go-to-person for all inquiries



JAN JENNES
Administration Officer - organizational
backbone for back office support
of your event



Rouven STROHMENGER
Sr. Manager Courses & Events - passionate about
fulfilling customized requests and building
long time customer relationships



PAUL NORRIS
Lab Manager - problem solver
with long-lasting experience in
managing anatomical specimen



BOOK YOUR EVENT
info@cadlab-cologne.com | +49 221 500 576 71

CADLAB COLOGNE GmbH | Nattermannallee 1 | 50829 Cologne | Germany
info@cadlab-cologne.com | +49 221 500 576 71